

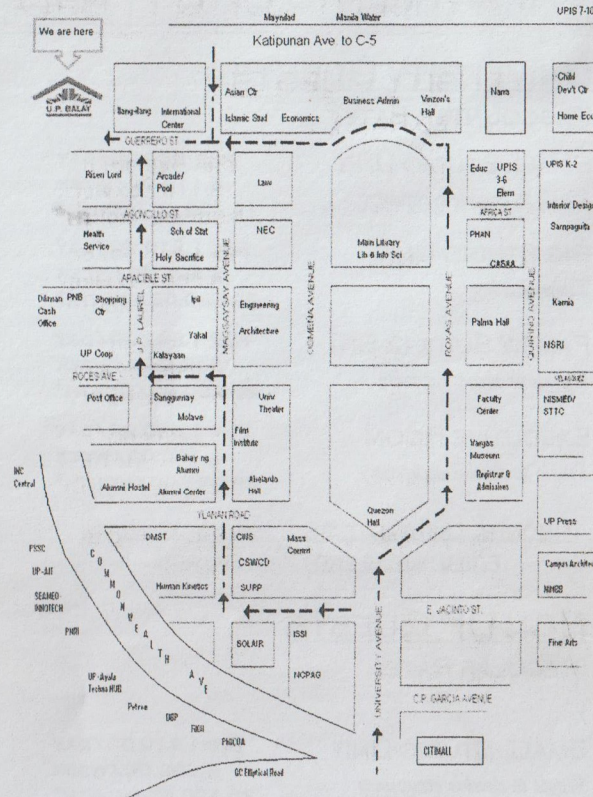
ABOUT US

The U.P. Balay Internasyonal was inaugurated in 1993. It was one of the many important projects of former U.P. President, Dr. Jose V. Abueva. It has for its facilities the Ikeda Hall / Balay Kalinaw (House of Peace) where we offer the ideal venue for many academic and related events, civic and cultural activities and other social gatherings.

Right beside Ikeda Hall is the Kapit-balay (Neighbor) where we offer fully-furnished studio and apartment units for guests of the University to make it their "home away from home", primarily to foreign visiting professors, scientists, artists, researchers and many more.



SERVING THE UNIVERSITY SINCE 1993.



UP Balay Internasyonal U.P. INTERNATIONAL HOUSE

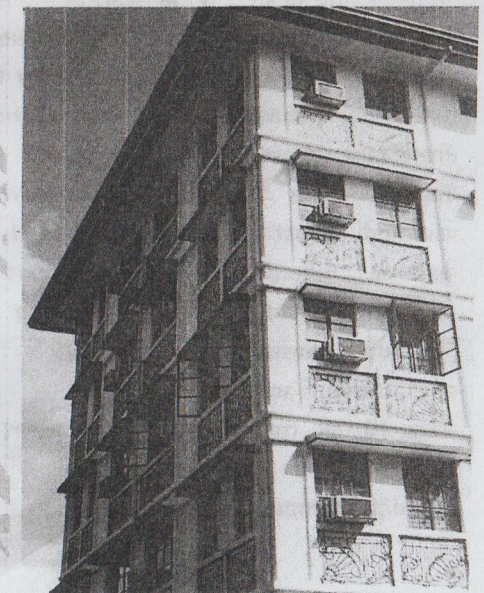
Guerrero corner Dagohoy Streets
University of the Philippines
1101 Diliman, Quezon City
PHILIPPINES

Trunkline: (63-2) 981-8500 loc. 4408
Tel./Fax: (63-2) 8920-4843
Mobile numbers: 09182425509 / 09777148192
E-mail add.: upbalayinternasyonal.upd@up.edu.ph



U.P. Balay Internasyonal

KAPIT-BALAY ROOM RATES



GUERRERO CORNER DAGOHY STREETS
UNIVERSITY OF THE PHILIPPINES
1101 DILIMAN, QUEZON CITY, PHILIPPINES

KAPIT-BALAY SERVICED APARTMENTS OF U.P. BALAY INTERNASYONAL



FAMILY SUITE LOUNGE AREA

The Kapit-balay (neighbor) provides housing facilities for visiting professors, scholars, researchers and foreign graduate students, and

accommodations for live-in seminar/conference participants. It has two 4-storey walk-up apartment buildings with 24 residential units: 16 studio and 8 two-bedroom apartment units. Each unit is fully-furnished with air-conditioned bedrooms, kitchenette for in-room cooking, private toilet and bathroom with shower heater.

Conveniently located in the heart of the University of the Philippines campus in Diliman, Quezon City, U.P. Balay is only a few meters away from the University Health Service, the Catholic and Protestant churches, the University Shopping Center and the UP Co-operative Store, where one can find almost everything from food, clothing apparels, toiletries to internet shops. Most academic buildings are within walking distance. For public transport, our location is accessible to all routes going around and out of the campus.



BIG STUDIO UNIT

UNIVERSITY GUESTS

(DISCOUNTED RATE)

SMALL STUDIO UNIT	PHP 940.00/DAY
<i>Single to double occupancy</i>	5,110.00/WEEK
	15,930.00/MONTH*
BIG STUDIO UNIT	PHP 1,210.00/DAY
<i>Twin-sharing</i>	6,600.00/WEEK
	20,590.00/MONTH*
FAMILY SUITE (2-BR)	PHP 1,530.00/DAY
<i>4 persons max. capacity</i>	8,350.00/WEEK
	26,050.00/MONTH*
EXECUTIVE ROOM	PHP 1,530.00/DAY
<i>Single to double occupancy</i>	8,350.00/WEEK
	26,050.00/MONTH*

* MONTHLY RENTALS DO NOT INCLUDE CHARGES
FOR UTILITIES AND LINEN SERVICE.

NON-UP GUESTS

(REGULAR RATE)

SMALL STUDIO UNIT	PHP 1,210.00/DAY
<i>Single to double occupancy</i>	6,600.00/WEEK
	20,600.00/MONTH*
BIG STUDIO UNIT	PHP 1,573.00/DAY
<i>Twin-sharing</i>	8,580.00/WEEK
	26,080.00/MONTH*
FAMILY SUITE (2-BR)	PHP 1,980.00/DAY
<i>4 persons max. capacity</i>	10,820.00/WEEK
	33,740.00/MONTH*
EXECUTIVE ROOM	PHP 1,980.00/DAY
<i>Single to double occupancy</i>	10,820.00/WEEK
	33,740.00/MONTH*

* MONTHLY RENTALS DO NOT INCLUDE CHARGES
FOR UTILITIES AND LINEN SERVICE.

ADDITIONAL CHARGES

(FOR MONTHLY RENTALS)

UTILITIES	PHP 1,000 (SML STUDIO)
<i>Minimum monthly charge for electricity and water</i>	1,500 (BIG STUDIO)
	2,000 (SUITE/EXEC)
DEPOSIT FOR UTILITIES	PHP 2,000 (STUDIOS/EXEC)
<i>For any excess consumption, damages or losses.</i>	4,000 (FAMILY SUITE)
<i>Refundable upon check-out</i>	

OPTIONALS

LINEN SERVICE	PHP 605 (SINGLE BED)
<i>Beddings and towels</i>	730 (DOUBLE BED)
	1,210 (EXEC RM)
KITCHENWARE SET	PHP 200/SET
<i>Additional cooking implements</i>	
LUGGAGE STORAGE	PHP 15/SML PC/DAY
<i>Limited space available</i>	20/BIG PC/DAY
	200/MONTH
SAFEKEEPING SERVICES	FREE

NOTE: ALL PRICES ARE SUBJECT TO CHANGE WITHOUT PRIOR NOTICE.
RATES AS OF JUNE 2012